

**MONTE D. FITTS, REALTORS  
THE WHALER ON KAAPALI BEACH  
2/3/2012**

**CONDOMINIUMS LISTED FOR SALE**

<b><u>STUDIO:</u></b>		<b>Land Tenure</b>	<b>List Price</b>	
WHALER #663		FEE SIMPLE	\$450,000.00	
WHALER #1064	IN ESCROW	FEE SIMPLE	\$455,000.00	Sale Pending
WHALER #816		FEE SIMPLE	\$459,000.00	
WHALER #463		FEE SIMPLE	\$463,000.00	
WHALER #315		FEE SIMPLE	\$599,000.00	
WHALER #1161		FEE SIMPLE	\$795,000.00	
WHALER #1215		FEE SIMPLE	\$825,000.00	
WHALER #162		FEE SIMPLE	\$850,000.00	
WHALER #214		FEE SIMPLE	\$850,000.00	
<b><u>ONE BEDROOM/ONE BATH:</u></b>				
WHALER #656		LH-Fee Available	\$495,000.00	
WHALER #519		FEE SIMPLE	\$735,000.00	
<b><u>ONE BEDROOM/TWO BATH:</u></b>				
WHALER #270		FEE SIMPLE	\$598,500.00	
WHALER #669		FEE SIMPLE	\$599,000.00	
WHALER #969		FEE SIMPLE	\$675,000.00	
WHALER #124		FEE SIMPLE	\$725,000.00	
WHALER #624		FEE SIMPLE	\$749,000.00	
WHALER #1170		FEE SIMPLE	\$825,000.00	
WHALER #974		FEE SIMPLE	\$985,000.00	
WHALER #670		FEE SIMPLE	\$1,150,000.00	
WHALER #907		FEE SIMPLE	\$1,250,000.00	
WHALER #1112		FEE SIMPLE	\$1,250,000.00	
WHALER #607		FEE SIMPLE	\$1,350,000.00	
WHALER #451		FEE SIMPLE	\$1,700,000.00	OCEAN FRONT
<b><u>TWO BEDROOM/TWO BATH</u></b>				
WHALER #973		FEE SIMPLE	\$1,195,000.00	
WHALER #1273		FEE SIMPLE	\$1,495,000.00	
WHALER #202		FEE SIMPLE	\$2,350,000.00	OCEAN FRONT
WHALER #602		FEE SIMPLE	\$2,525,000.00	OCEAN FRONT
<b><u>THREE BEDROOM/TWO AND A HALF BATH</u></b>				
WHALER #1201		FEE SIMPLE	\$3,595,000.00	One of a Kind

**RECENT WHALER CLOSINGS**

<b><u>STUDIOS:</u></b>		<b>Land Tenure</b>	<b>Sold Price</b>	<b>Closing Date</b>
WHALER #1018		FEE SIMPLE	\$465,000.00	1/15/2010
WHALER #716		FEE SIMPLE	\$450,000.00	3/5/2010
WHALER #661		FEE SIMPLE	\$425,000.00	4/9/2010
WHALER #1261		FEE SIMPLE	\$460,000.00	4/29/2010
WHALER #1062		FEE SIMPLE	\$475,000.00	5/4/2010
WHALER #964		FEE SIMPLE	\$450,000.00	5/26/2010
WHALER #1013		FEE SIMPLE	\$465,000.00	6/9/2010
WHALER #565		FEE SIMPLE	\$379,000.00	10/11/2010
WHALER #215		FEE SIMPLE	\$389,000.00	3/22/2011
WHALER #664		FEE SIMPLE	\$460,000.00	5/6/2011
WHALER #165		FEE SIMPLE	\$395,000.00	5/19/2011
<b><u>ONE BEDROOM/ONE BATH:</u></b>				
WHALER #720		FEE SIMPLE	\$820,000.00	2/26/2008
WHALER #1119		FEE SIMPLE	\$650,000.00	2/28/2011
WHALER #456		FEE SIMPLE	\$700,000.00	12/15/2011
WHALER #259		FEE SIMPLE	\$525,000.00	12/27/2011
<b><u>ONE BEDROOM/TWO BATH:</u></b>				
WHALER #1208		FEE SIMPLE	\$1,250,000.00	12/22/2008
WHALER #870		FEE SIMPLE	\$850,000.00	10/14/2009
WHALER #470		FEE SIMPLE	\$660,000.00	3/23/2010
WHALER #912		FEE SIMPLE	\$605,000.00	7/7/2011
WHALER #560		FEE SIMPLE	\$1,100,000.00	8/24/2011
<b><u>ONE BEDROOM/TWO BATH OCEANFRONT</u></b>				
WHALER #801	Oceanfront	FEE SIMPLE	\$2,100,000.00	3/31/2007
WHALER #451	Oceanfront	FEE SIMPLE	\$1,875,000.00	3/28/2008
<b><u>TWO BEDROOM/TWO BATH</u></b>				
WHALER #523		FEE SIMPLE	\$1,285,000.00	7/9/2009
WHALER #223		FEE SIMPLE	\$999,995.00	7/9/2010
WHALER #1223		FEE SIMPLE	\$2,500,000.00	9/7/2010
<b><u>TWO BEDROOM/TWO BATH OCEANFRONT</u></b>				
WHALER #402	Oceanfront	FEE SIMPLE	\$2,500,000.00	5/26/2006
WHALER #602	Oceanfront	FEE SIMPLE	\$2,800,000.00	10/5/2006
WHALER #1202	Oceanfront	FEE SIMPLE	\$2,400,000.00	5/28/2010
WHALER #402	Oceanfront	FEE SIMPLE	\$1,900,000.00	5/20/2011
<b><u>THREE BEDROOM/TWO AND A HALF BATH OCEANFRONT</u></b>				
WHALER #1201	Oceanfront	FEE SIMPLE	\$3,210,000.00	9/23/2005
WHALER #1201	Oceanfront	FEE SIMPLE	\$3,300,000.00	12/11/2009

WHALERS VILLAGE SUITE A-1, 2435 KAAPALI PARKWAY, LAHAINA, HI 96761

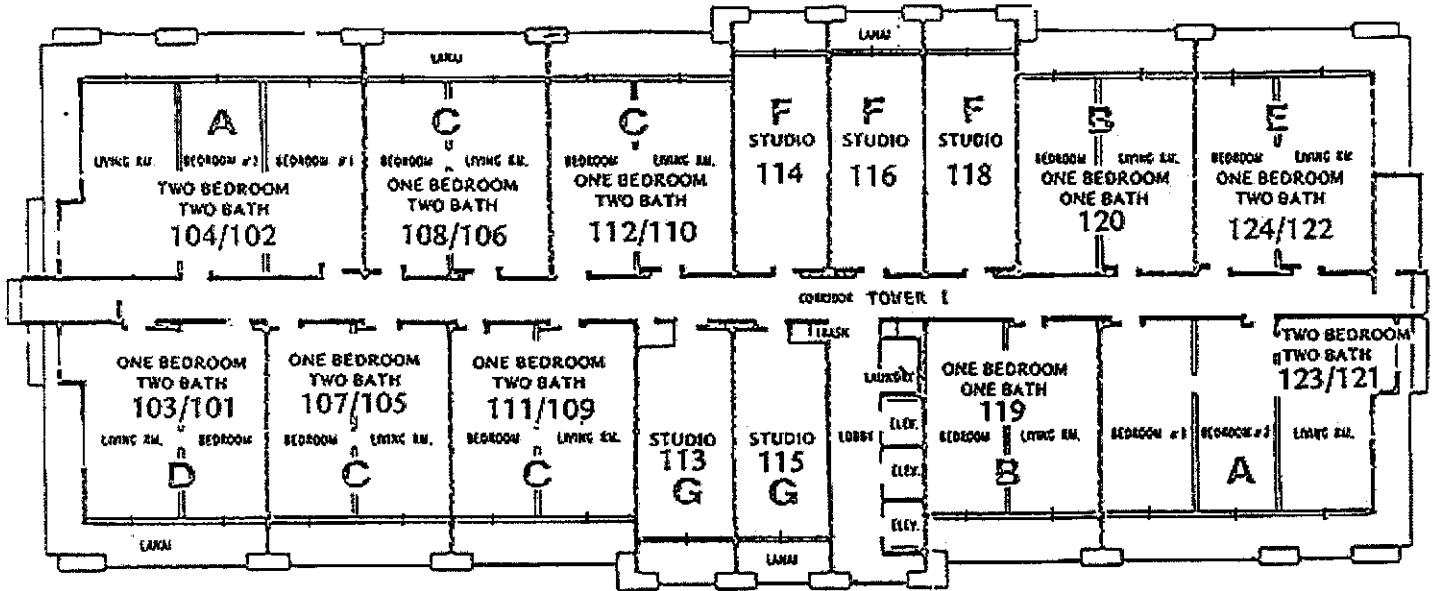
Toll Free (877) 808-8484 Office (808) 661-8863 / 661-3030 Fax (808) 667-5922

monte@thewhaler.com / www.thewhaler.com

# WHALER WHOLE UNITS

NORTH - KAA NAPALI BEACH HOTEL 

TOWER I



OCEAN



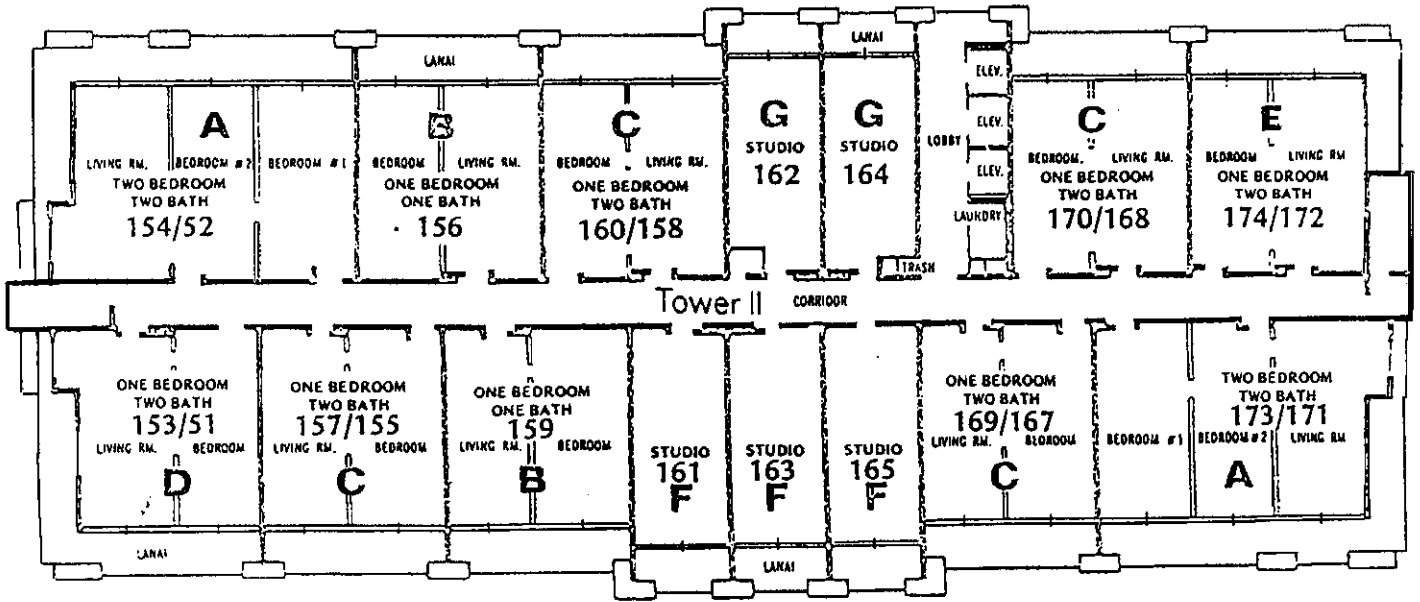
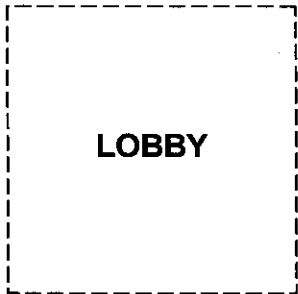
MOUNTAIN



CENTER COURTYARD



LOBBY



TOWER II

SOUTH - WHALERS VILLAGE 



**MONTE D. FITTS, REALTORS**

Whalers Village, Suite A-1  
 2435 Kaanapali Parkway, Lahaina, HI 96761  
 Toll-Free (877) 808-8484 / Local (808) 661-8863

[www.thewhaler.com](http://www.thewhaler.com)